



---

## Criteria IV - Infrastructure & Learning Resources

### 4.1.1: The Institution has adequate infrastructure and other facilities for

1. **teaching – learning, viz., classrooms, laboratories, computing equipment etc**
2. **ICT – enabled facilities such as smart class, LMS etc.**
3. **Facilities for Cultural and sports activities, yoga centre, games (indoor and outdoor), Gymnasium, auditorium etc.**



**SRI SATHYA SAI COLLEGE FOR WOMEN, BHOPAL**

**Kasturba Hospital Road, Habibganj, Bhopal - 462024**



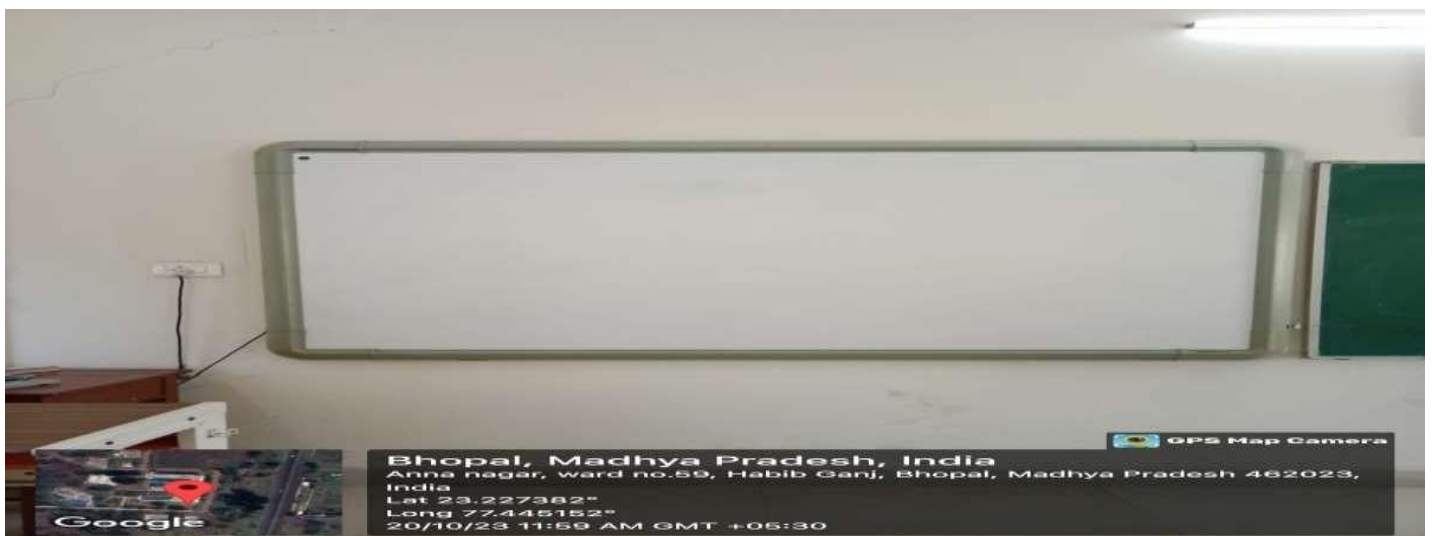
- 1. teaching – learning, viz., classrooms, laboratories, computing equipment etc**

[https://www.srisatyasaiedubpl.org/Gallery/teaching\\_learning\\_facilities.php](https://www.srisatyasaiedubpl.org/Gallery/teaching_learning_facilities.php)



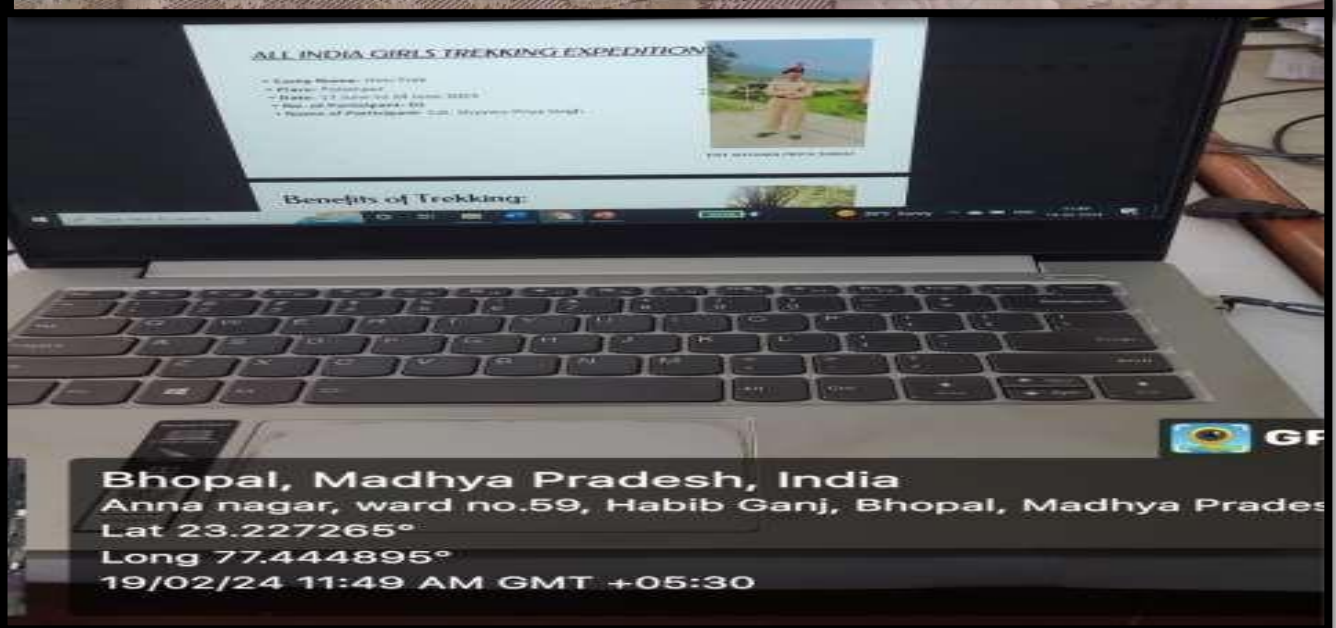
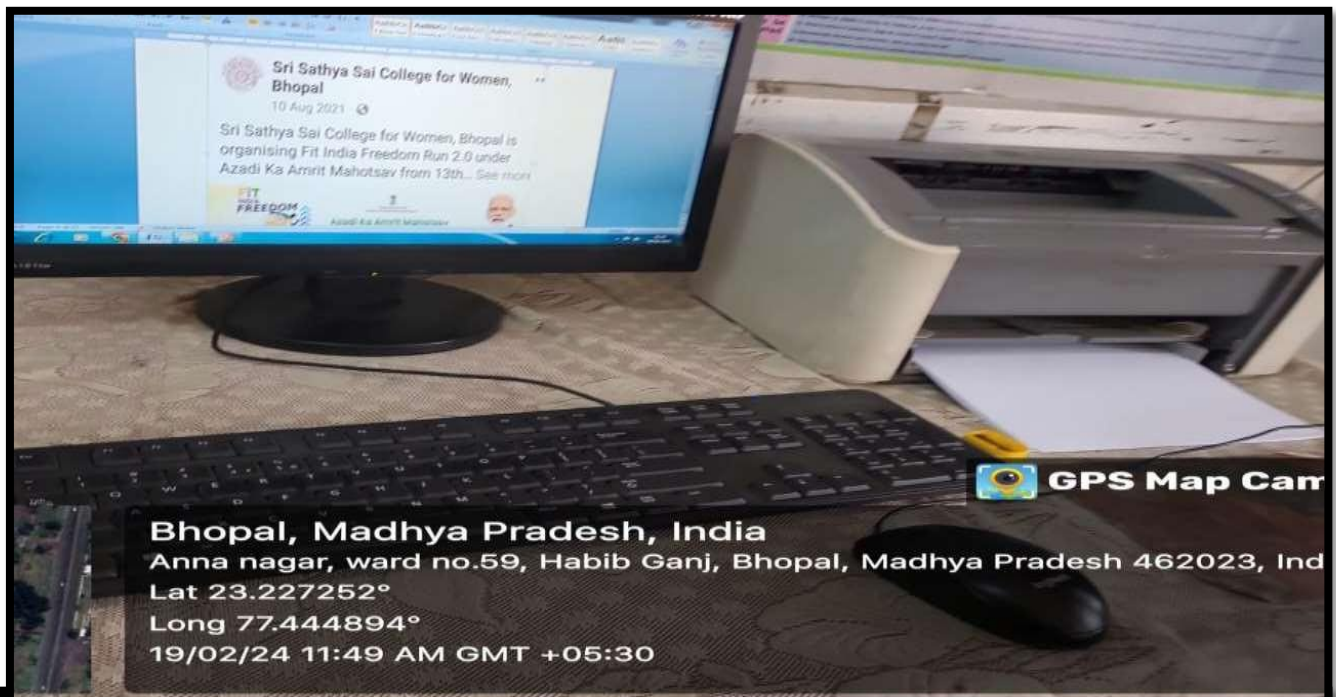
2. ICT – enabled facilities such as smart class, LMS etc.

Smart Board in Chemistry & Biology Dept.



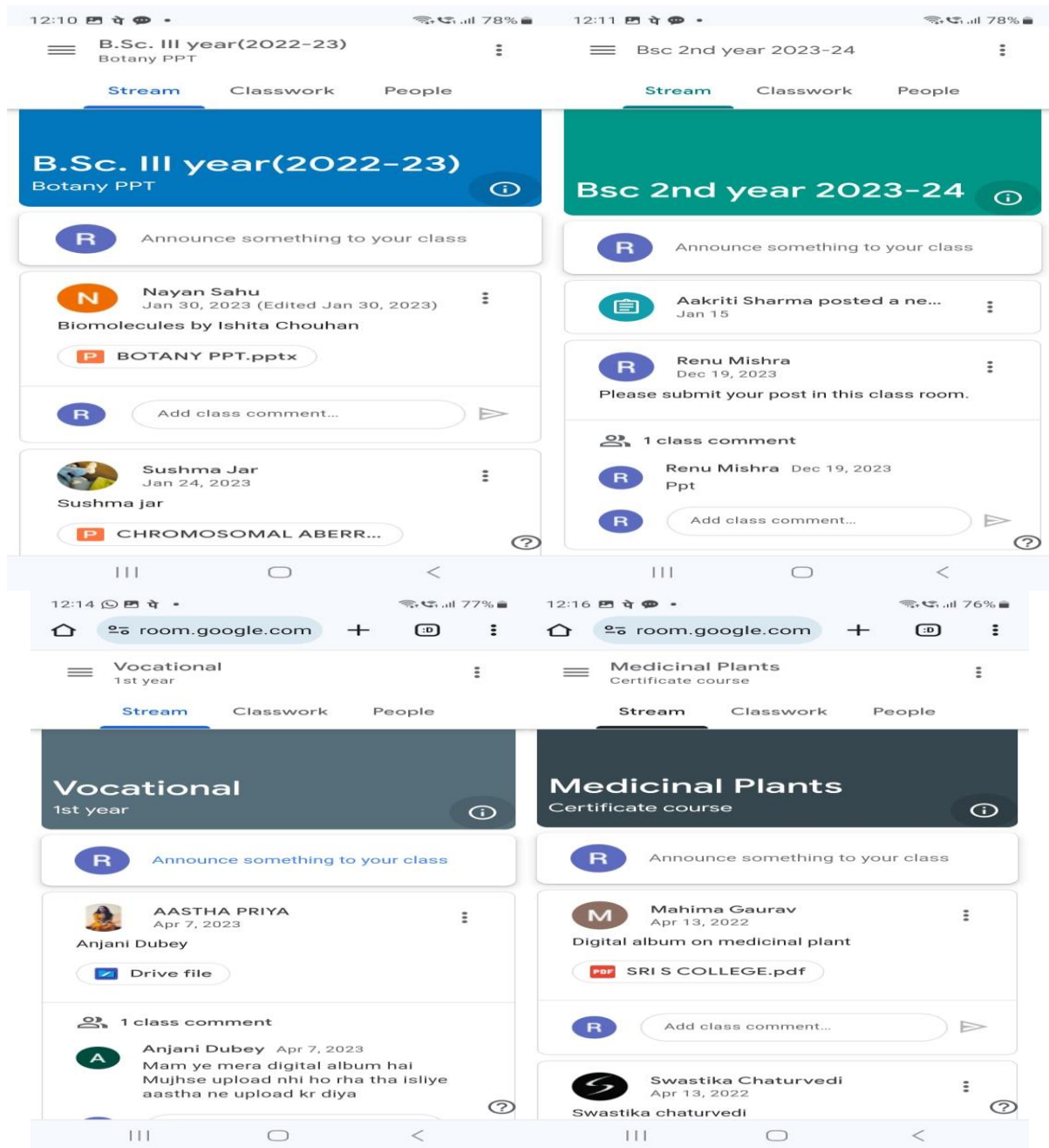


## Laptop and computer





## Google Class Room for Submission of PPT



**(3) Facilities for Cultural and sports activities, yoga centre, games (indoor and outdoor), Gymnasium, auditorium etc.**



## Sports



## Indoor Game - Table Tennis





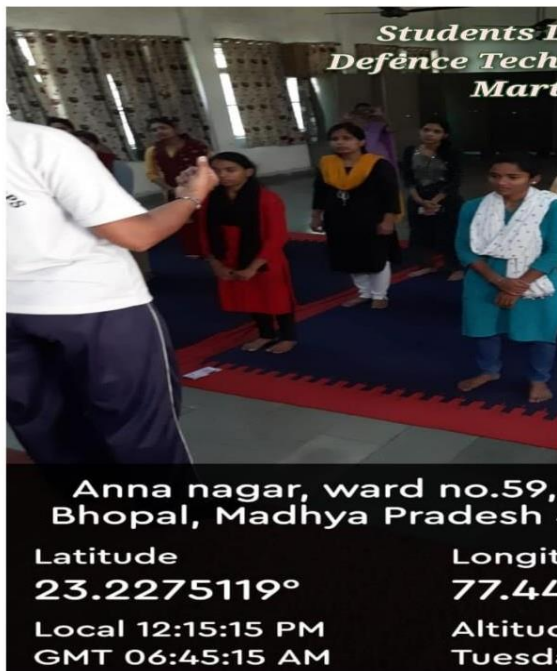
## Auditorium





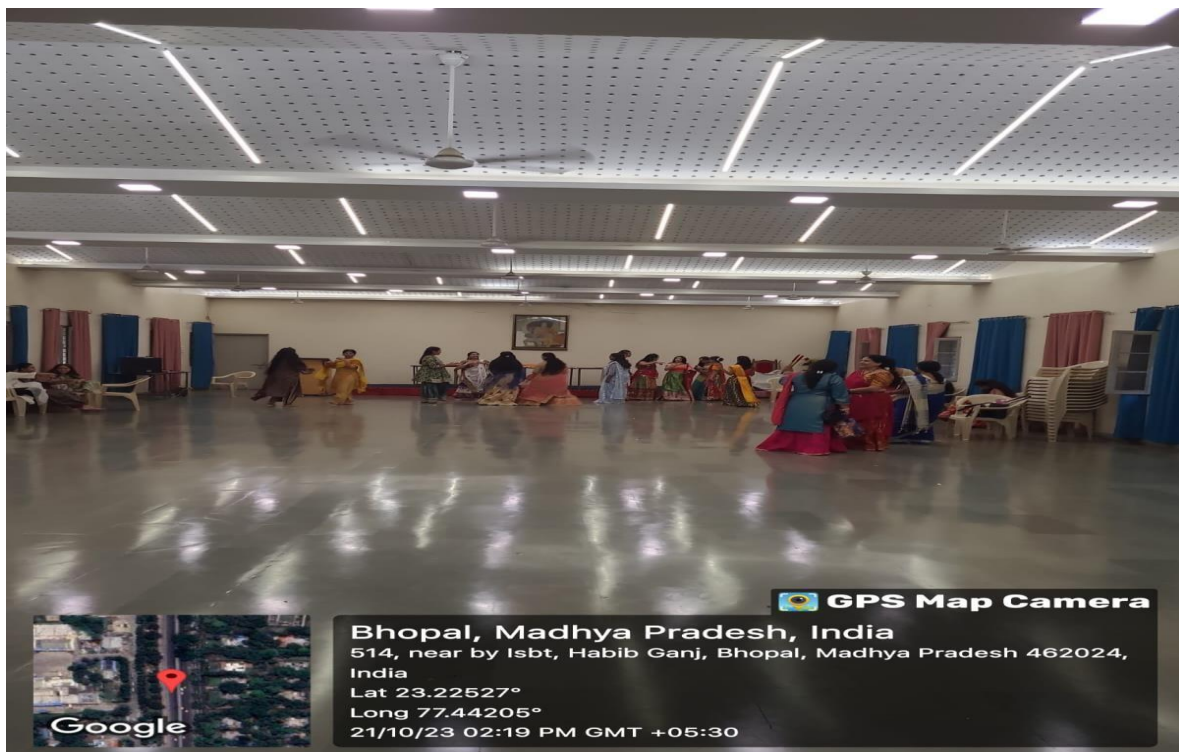


### Multipurpose Hall 1





### Multipurpose Hall 2



**Open Stage**



**Kushabhau Thackrey Inter State Bus  
Terminus, Hoshangabad Road, Kasturba  
Nagar, Bhopal, Madhya Pradesh 462024,  
India**

**Latitude  
23.22759060189  
128°**

**Longitude  
77.4450116045773  
°**

**Local 12:07:57 PM  
GMT 06:37:57 AM**

**Altitude 457 meters  
Saturday, 03-05-2022**